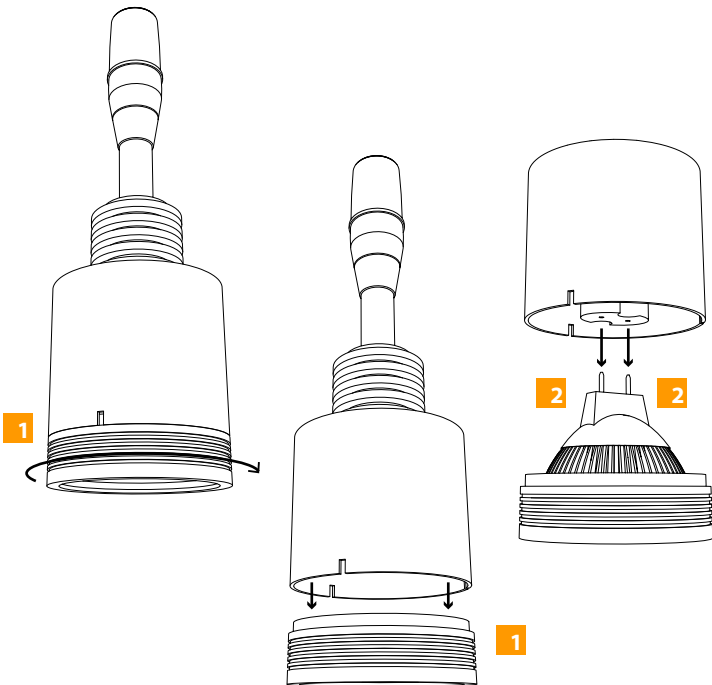
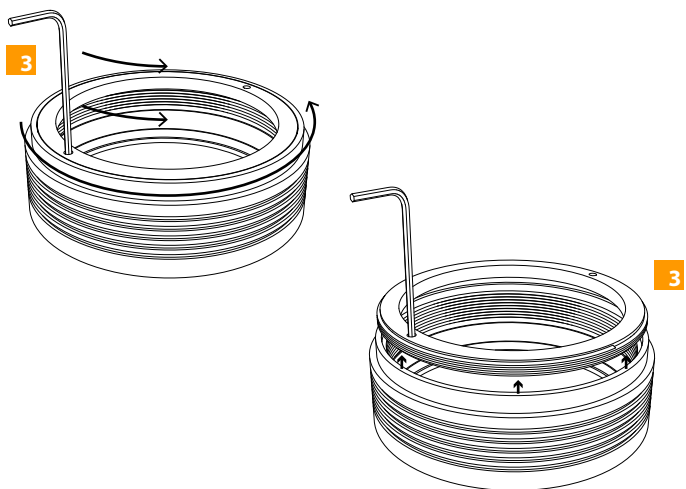


**1** Twist cap a few degrees to remove from fixture housing

**2** If lamp is already installed, gently unplug lamp from socket wiring

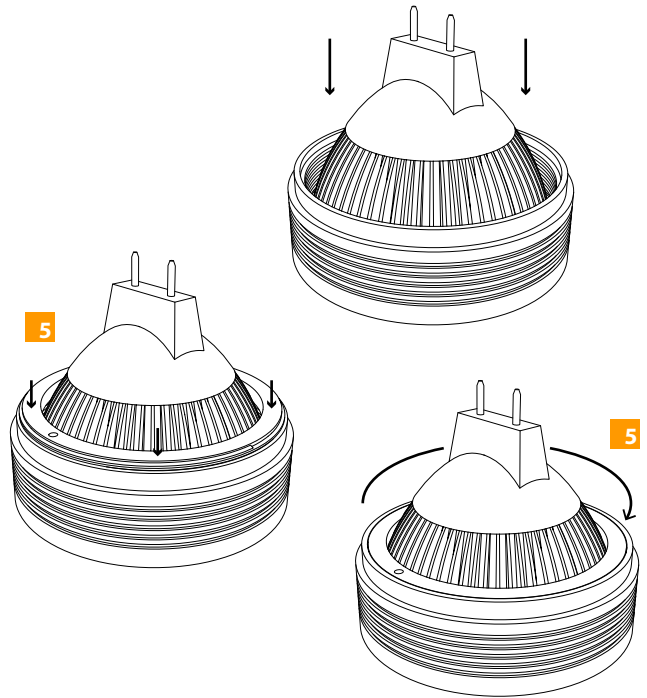


**3** Insert a small hex key, push pin, or paper clip into one hole in the lamp retaining ring and twist counter clockwise to unscrew



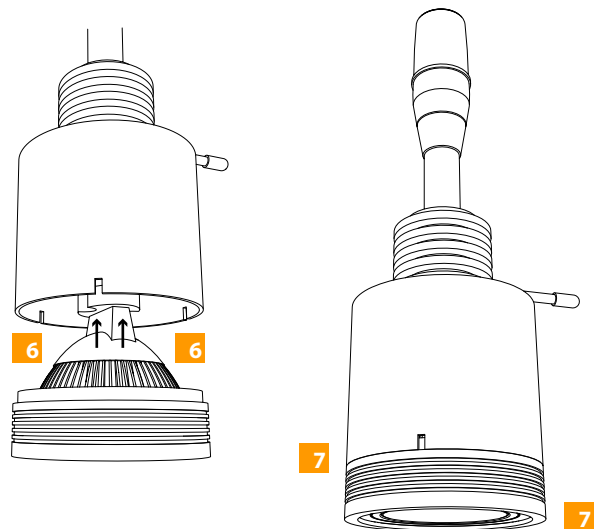
**4** Set lamp in cap

**5** Replace retaining ring and screw down until snug against lamp



**6** Plug lamp into fixture socket

**7** Gently twist cap and lamp assembly into fixture body



**SAVE THIS INSTRUCTIONS**